

Inside this issue:



- NEWS
- REMOTE ACCESS TO e.VENTURE
- TAILORING
- WHAT IS KINETIC?
- DESIGN YOUR OWN SCREENS
- OCTOPUS ASSET MANAGEMENT
- NEW STARTER
- MISSING MEMORY

News:

PEI — Fund Administration and Technology Compendium (June 2005)

Article contributed by us on meeting the needs of the Front Office (Details from Private Equity International +44 20 7566 5444)

Editorial

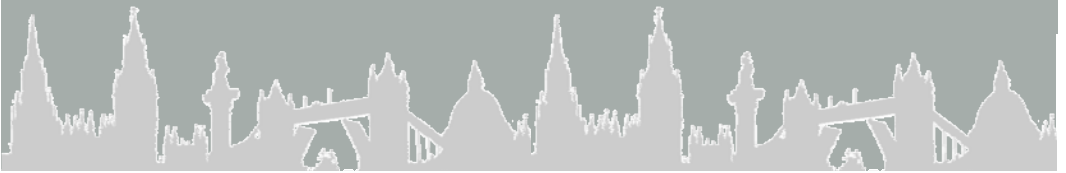
Welcome to our 2nd newsletter. A lot seems to have happened since June. On the technology front, we have completed a proof of technology trial for remote access from PDA/telephones to e.Venture and Kinetic. More on this in the article below.

Our user base now exceeds 400 concurrent licences, representing some 7-800 of you and in this issue, we thought it would be appropriate to offer a user perspective of our systems. In the first of our user focus articles,

Chris Allner, a Director of Octopus Asset Management, will share some of his experiences on Kinetic with you. We are hoping to make these articles a regular feature of the newsletter.

As always, best regards

Surapongs



Remote access to e.Venture

We have been advocating the benefits of remote access *and* the use of PDAs. Some of you may remember the Deal Log database we wrote for the Palm platform in 1999. Others may remember the conduit we wrote in 2000 to synchronise contacts to the Palm desktop. Remote access? We have been doing *that* since 2000.

Remote access using a PDA on the other hand has not really been possible. Performance has been poor, connections unreliable and there has been no single standard for the underlying technology.

This is all about to change. Firstly, there has been the recent announcement of cooperation between RIM (the makers of the Blackberry) and Microsoft on the Pocket PC platform. Secondly, Palm have stated that their next device, the Treo 750, would use the Pocket PC operating system rather than the traditional Palm operating system.

Therefore, for the first time, there will be a single standard for PDAs, and these might even have Blackberry push email support. This is the right time for trying remote access again.

The results have been encouraging. We have tested e.Venture and Kinetic access from an HP IPAQ device, both here in the UK, and from 10 separate locations across Europe and the Middle East.

Watch this space!

Contact John at jh@eventure.co.uk



Bespoking the system for ease of use

The database you have from us is probably the most intuitive system available for Private Equity. Out of the box, it offers many ways of grouping and extracting data and within your organisation, there is probably somebody who is recognised as the e.Venture or Kinetic “expert” who can do all this. But maybe not you.

With the new facility for building selections, these individuals can now share their expertise with the rest of the office.

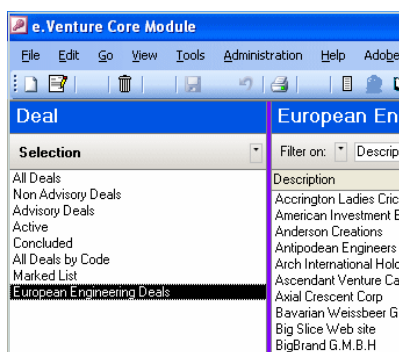
Imagine, using the system to throw up a list of deals in Engineering logged this year by yourself. You can now — with a little help from you office “expert”. You press a button, and the query that your “expert” has created and put behind the button will do the rest.

- Want to see investments in Scotland? **Easy!**
- Want to see investors in the US? **Press the button!**

The process is more fully described in our new Installation Manual.

If you need another copy of this or any help in how to use this facility, please send me an email. Remember though that you will need administrator rights in the system to use this facility.

Contact Jon at jt@eventure.co.uk



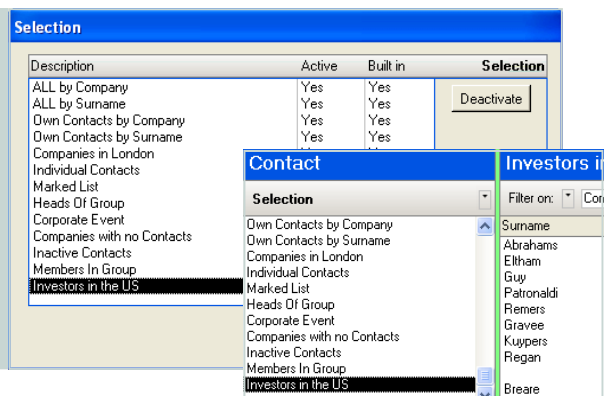
European Engineering Deals

Use a sector field to define your Engineering search and use geographical location to define Europe!
Now put it on the selection panel. Easy!!

Investors in the US

Assuming that you have used a contact type field to define investors, select this contact type (i.e. where the box has been ticked) and then choose the country field and search for US!

Now put it on the selection panel. Easy!!



Kinetic?

In 2004, we launched what became a very successful sister product for e.Venture. Kinetic offered Private Equity firms a vision of a new breed of software which did not only just meet their needs, but did so out of the box and for a fixed price.

So what is Kinetic?

Kinetic is best seen as an alternative for those clients looking for a product like e.Venture but do not need the complexity of cash flow monitoring and fund structures. A typical client could be a Start Up Fund, a Family Office or a fund where the Back Office has been outsourced.

As with e.Venture, Kinetic offers relationship management, deal log processing and portfolio monitoring.

We had to think laterally to provide many of the features needed to support a product like Kinetic.

- How can we make the product easy to deploy and more cost effective?
- If Kinetic is going to be used in an environment where there is to be little IT support, how can we make sure that it remains problem free?
- What will make Kinetic a better tool for people in Private Equity over Outlook, Goldmine and ACT (not to mention our traditional competitors)?

Octopus Asset Management



Octopus specialises in providing £1 to £4 million of equity finance for management buy-outs and development capital for UK companies in transactions with an enterprise value up to £20 million. Octopus became a user of Kinetic in August last year following a period of relying on an in-house database, Excel and Outlook. At present the system is used for relationship management, deal flow and document management. Data from the system is being transferred to Outlook for use later in PDAs.

Chris Allner, a Director at Octopus and a former user of e.Venture while at ProVen Private Equity said "The system was installed and operational within a week and is generally problem free. This year, following our expansion, we are hoping to extend our use of the system to track investments"

For further information on Octopus, please contact

Chris Allner
callner@octopusam.com.



The way we have resolved some of these issues can be seen in the changes made to both of our products in version 6.

There is still more to come. Version 7 promises further changes to help you run your software as we move towards our concept of data warehousing

Read more about Version 7 in the next issue of the newsletter!



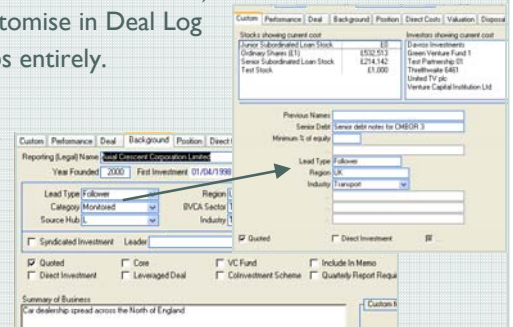
Designing your own screens

Have you ever wanted to change screen layouts in e.Venture? The new custom tab in version 6 allows you do this in both e.Venture and Kinetic. You can create a summary screen in a complex subsystem such as Investments, bringing the most important information to the front and in one place. You can customise in Deal Log to suit your data capture and business process, and remove some of the default tabs entirely.

Improved visibility or simplification, the choice is yours!

To find out how to use this process, please refer to the new Installation manual for version 6. If you need another copy of this, please send me an email.

Contact Surapongs at sc@eventure.co.uk



New Starter

Ray Puzey has recently joined us as a Programmer after 5 years with the Bank of New York. He has 2.1 Degree and is a Microsoft Certified Application Developer in Visual Studio .Net.

While you may not see much of Ray (since he will be beavering away in our office on your behalf), you may both hear from him and be able to read his literary output. Ray's hobbies are music (mostly electronic) and writing. He is one of the many people who have had a film script rejected!



Contact Ray at rp@eventure.co.uk

Next Issue:

- Kinetic v7
- Data Warehousing
- Foresight Venture Partners
- Reporting on exchange gains/loses

And much more



Missing Memory

Many of you have been upgrading from Office 2000 to Office 2003 recently. While this will have given you many improvements, faster performance is probably not one of these. Changing all hardware is not an option for many people but increasing the amount of memory on some PCs may help to speed things up. Buying memory can be cheap, costing as little as £30 (€50) per PC.

Memory provides a working space for the various programs that you run throughout the day, and with each version of Office, the requirement for memory has increased. To help you to determine whether you should be considering this, we have provided a little utility in both e.Venture and Kinetic.

Click on Help and then System Info within either of our products and you will be able to see how much memory on your individual PC is being used. Red suggests that some more memory might be helpful, yellow is merely a warning and green means that no more memory is needed.

Contact Brendan at bob@eventure.co.uk

Path	File Size	Version	Disk Space		
Access	C:\Program Files\Microsoft Office\OFFICE11\MSACCESS.EXE	11.0.6395.0	93258 Mb		
Security	C:\PROGRAM\COMMON\SYSTEM\SYSTEM.MD5	4.0.8618.0	93258 Mb		
Library	C:\eVenture Versions\Investor 2\Ver00m.mdb	47,583,232	6.0.03	93258 Mb	
Front End	C:\eVenture Versions\Investor 2\Ver00m.mdb	47,583,232	6.00	03x	93258 Mb
Back End	C:\eVenture Versions\Investor 2\Ver00dal.mdb	8,466,432			93258 Mb

To subscribe to your own copy of our newsletter return the form below to us:

Name:

Company:

Address:

e.Venture Systems Limited - Sixth Floor - Cygnet House - 12-14 Sydenham Road - Croydon - CR9 2ET - UK
Phone: +44 (0)20 8686 8300 Fax: +44 (0)20 8688 5690 email: info@eventure.co.uk www.eventure.co.uk