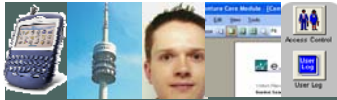


# eV news

Issue 1, 2005

e.Venture Systems Limited

## In this issue



- eV grows!
- Going abroad?
- What's in V6
- Blackberries
- Cloning wars
- Simon arrives

## Next Issue

### In our next issue:

- Custom tabs, how?
- Octopus - Kinetic
- Loosing your memory? Help!
- Living with a PDA

And much more .....

## Editorial

Welcome to our first newsletter.

Here you will find the latest news on e.Venture and Kinetic also some tips on how to get the best out of your software. I hope that we can even persuade some of you to share your experiences and thoughts with us in future issues.

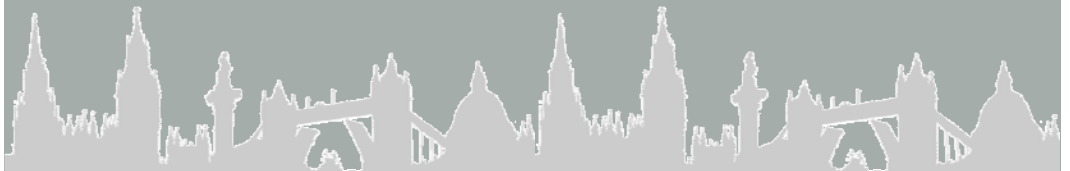
To celebrate this milestone, we are planning a party. A short presentation on new features in version 6 will be followed by drinks and nibbles. Details for this will sent to you shortly.

The party will be an annual event and serve as a forum for user discussions.

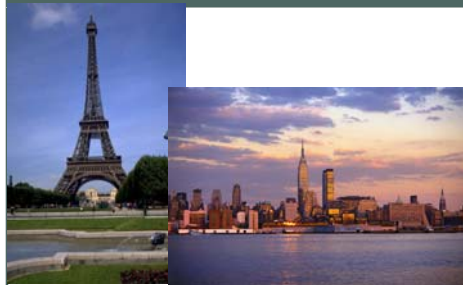
Any comments on the newsletter, or items you want to include, please send them through to me at [sc@eventure.co.uk](mailto:sc@eventure.co.uk)

As always, best regards

*Surapongs*



## e.Venture still growing



at the same time offer yet more flexibility? What guarantees can we make that will make our products the system of choice for people in Private Equity? How can we make our software fit you better?

We must have done something right. Our clients are now spread across 52 sites in 11 countries. Over 100 Kinetic licences were sold in its first year.

A big and grateful thank you from all of us at e.Venture for your continuing support. We would not be here without you.

1992 seems a long time ago now, but that was when we first started working in systems for Private Equity.

Our core values have not changed over the years. We still aim to give you value for money software that is easy to use coupled with an unparalleled level of support and service.

Last year was a bit special though.

Kinetic brought us new challenges. How could we continue to drive costs down while



# Marketing Visits

How often have you gone somewhere different and want to see as many of your contacts as possible?

Your e.Venture or Kinetic software can simplify the process of finding people and arranging meetings. You can print a list of interaction with key contacts in the area and a link between our software and Outlook will ensure that telephone numbers and addresses are available on your PDA or mobile phone when you get there.



## How To .....

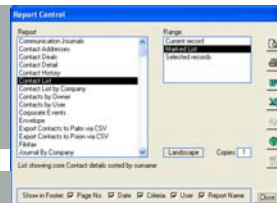
*I am visiting Munich and I need to take with me a print out of all the Contacts in that area. Also it would be useful to have some background information about the communications that we have had with these contacts so far.*

1. Firstly create a filter that shows all of the contacts based in the Munich area. Click on the Marked List icon

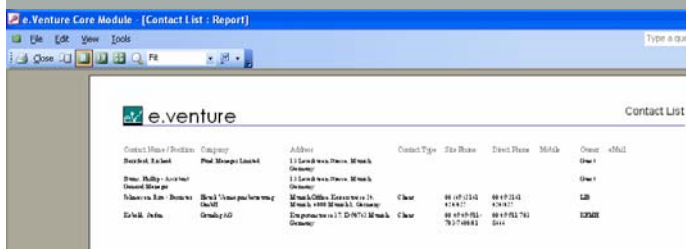


2. Create a new marked list. To add the contacts, click on the Select all Button to add the contacts from your filter into your Marked list. Click on Close to complete.

3. Select the report required



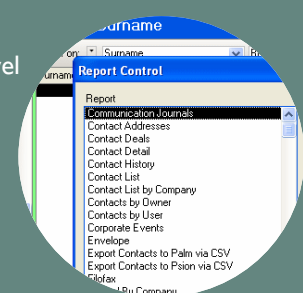
4. To print a report showing general information click on Contact List, from the Range area select Marked list, then click on Preview icon, from the Marked Lists choose your list, click Print. Your list will then appear within the Preview screen



## Useful Reports

There are a huge number of Reports that can help you to get the best output from the information stored.

- Communication Journals: A History of all Journals you have on your contacts
- Labels: List of labels to help with mailings
- Reports produced at Company level with patronage information
- Phone Lists: Printing a list of contact Phone numbers



# Features v6

Another year and yet more sophistication and end user features arrive for users of e.Venture and Kinetic. Version 6 continues the theme of ease of use and accessibility of information pioneered last year in Version 5. We have highlighted some of features here but if you would like more information please give us a call. We will be contacting you shortly to arrange a slot for an upgrade to your system.

Contact: Simon at [sb@eventure.co.uk](mailto:sb@eventure.co.uk)

# Blackberry Picking

Did you know that contacts held in e.Venture and Kinetic can be exported for use on Blackberries?

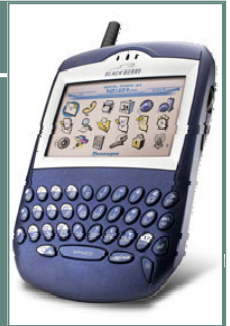
This is done by setting up a standard export from your software to MS Outlook and then linking the Blackberry directly to MS Outlook.

However, there are some issues to watch out for.

These include a general dislike of brackets and dashes in the telephone format on the part of the Blackberry and a need to consider the international aspects of telephone dialing.

We have worked on many projects involving Blackberries and have tools to convert your data to a style suitable for use with this device. For more information on both data transfer to MS Outlook and working with Blackberries please contact John Hutchins.

Contact : John at [jh@eventure.co.uk](mailto:jh@eventure.co.uk)



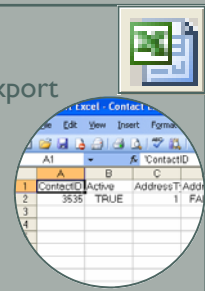
## New permissions

Permissions can be used to create contact groups, giving users read-only and editorial rights over certain contacts



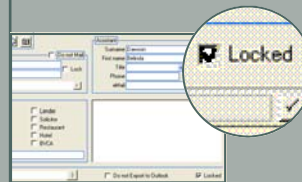
## Push to Excel

A one button feature that will export the current screen to Excel, whether you are in a record view or a list view, available in any of the sub-systems.



## Enhanced locking

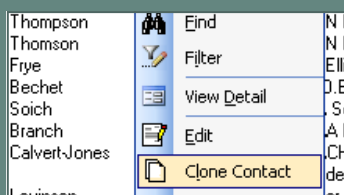
Locking information will give you the ability to control what editing can be done and by whom. The information can still be viewed by other users.



# Attack of the Clones

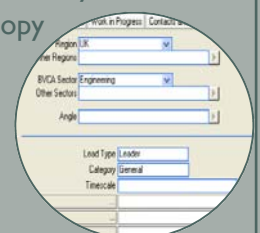
If you need to add a new contact to your database but already have several people on the database who work for the same company. You do not need to re-key information.

Simply locate one of the existing contacts from this company, right click on there details and then click on Clone Contact. A duplicate empty contact record will appear showing the company/site information. You need only to complete your new contact details and save.



## Custom screen design

You can easily create your own layout for deal log and investments using copy and paste. We will taking a closer look at this feature in the next newsletter.





## New Starters

Simon Bowley has joined us from DEFRA (Department for Environment, Food and Rural Affairs), where he was responsible for the development of a database to track claims for Foot and Mouth compensation. This database covered all claims in the UK and is being used both by the Department and external Solicitors.

At e.Venture, Simon will be responsible for the Help Desk, first line support and roll out of annual upgrades for both Kinetic and e.Venture.

Simon has a 2.1 degree in Geography and Archeology from Liverpool University and is a qualified programmer trained on both Visual Basic .Net and SQL server. Prior to starting full time employment Simon traveled extensively throughout South East Asia and Australia, where he qualified as an advanced PADI diver.

Contact Simon at [sb@eventure.co.uk](mailto:sb@eventure.co.uk)

## e.Venture in the News

- **Private Equity Technology Handbook (July 2004)**

Book written by Anthony Rose covering private equity systems throughout the world. e.Venture was the subject of an in depth review. (Details from Investor Access on +44 20 7906 1180 ISBN 1-904696-03-1)

- **Private Equity International — Fund Technology Handbook (December 2004)**

Article contributed by us on the development of 3rd Generation Software. (Details from Private Equity International +44 20 7566 5444)

- **4vco — Vendor Profile Update (January 2005)**

A update to a full review done last year by 4vco (details on [4vco.com](http://4vco.com))

---

**To subscribe to your own copy of our Newsletter complete the form below and return it to us:**

Name:

Company:

Address:

---

---

---

---

## e.Venture Systems Limited

Sixth Floor, Cygnet House  
12-14 Sydenham Road  
Croydon,  
Surrey, CR9 2ET, UK

Phone: +44 (0) 20 8686 8300  
Fax: +44 (0) 20 8688 5690  
Email: [info@eventure.co.uk](mailto:info@eventure.co.uk)  
[www.eventure.co.uk](http://www.eventure.co.uk)